

Spring plunger

FSTIm M5-IG 6/4 A 10 IN

Part no...:10.01.02.01337

<https://www.schmalz.com/10.01.02.01337>

Home > Vacuum Technology for Automation > Vacuum Components > Mounting Elements > Spring Plungers > Spring Plungers FSTIm > FSTIm M5-IG 6/4 A 10 IN

Spring plunger with internal damping spring and height compensation



Suction cup connection: M5-F

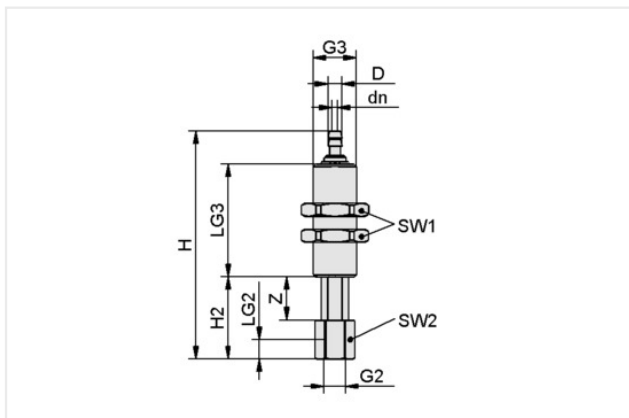
Vacuum connection: Hose 6/4

Shape: Axial vacuum guide

Spring stroke Z: 10 mm

Shape mounting elements: (electrically) insulating

Design Data



Attribute	Value
dn	2 mm
G2	M5-F
G3	M10x1-M
H	54.70 mm
H2	19 mm
LG2	4.50 mm
LG3	26 mm
SW1	14 mm
SW2	8 mm
Z (Stroke)	10 mm

Recommendation: Avoid maximum plunger stroke Z during continuous operation to extend service life Ensure that the hose guide is free from distortion

Technical Data

Attribute	Value
Shape mounting elements	(electrically) insulating
Spring rate	0.05 N/mm
Spring pretension	0.50 N
Spring force, center	0.75 N
Vertical load	15 N
Horizontal load	10 N

Contact Schmalz

Schmalz Australia Pty Ltd | 25 Turbo Drive, Bayswater North, VIC, 3153 Melbourne, Australia | +61 3 9215 8800 | schmalz@schmalz.com.au

Spring plunger

FSTIm M5-IG 6/4 A 10 IN

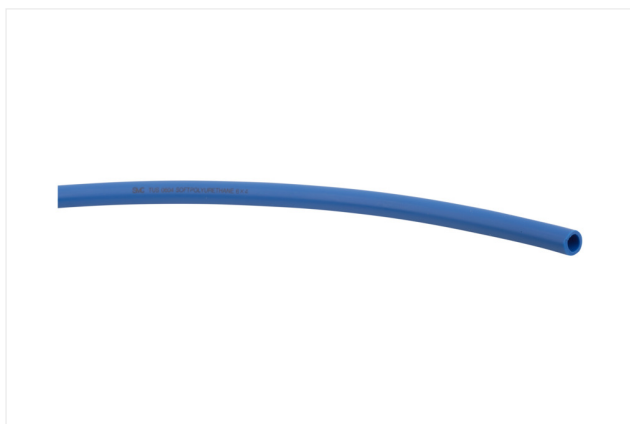
Part no...:10.01.02.01337

<https://www.schmalz.com/10.01.02.01337>

Weight	16 g
Operating temperature	0 ... 80 °C
Product family	FSTIm

Note: Spring force: Referred to 50 % of operating stroke Vertical loading: Maximum static loading Horizontal load: The specification of the horizontal load refers to the lower edge of the plunger with extended spring. It is a maximum static stress and it impairs the spring compression and extension in horizontal position.

Accessories



VSL 6-4 PU BL SO

Part no...:10.07.09.00141



HTR-STA 47 1N D10/16 FL

Part no...:10.08.03.00085

Length L: 47 mm

Connection 1: Sliding block

Connection of suction cup, spring plunger: Contour D10 and D16

Shape: flat

Contact Schmalz

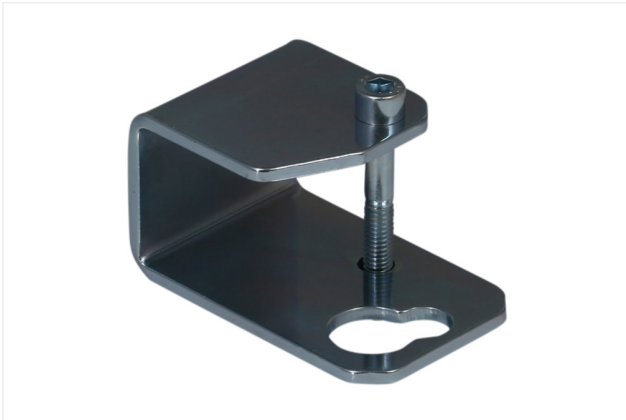
Schmalz Australia Pty Ltd | 25 Turbo Drive, Bayswater North, VIC, 3153 Melbourne, Australia | +61 3 9215 8800 | schmalz@schmalz.com.au

Spring plunger

FSTIm M5-IG 6/4 A 10 IN

Part no.:10.01.02.01337

<https://www.schmalz.com/10.01.02.01337>



HTR-ST5 30x30 D10/16 WI

Part no.:10.08.03.00088

Connection 1: 30x30

Connection of suction cup, spring plunger: Contour D10 and D16

Shape: angled



HTR-ST5 40x40 D10/16 WI

Part no.:10.08.03.00089

Connection 1: 40x40

Connection of suction cup, spring plunger: Contour D10 and D16

Shape: angled

Contact Schmalz

Schmalz Australia Pty Ltd | 25 Turbo Drive, Bayswater North, VIC, 3153 Melbourne, Australia | +61 3 9215 8800 | schmalz@schmalz.com.au