

Bellows suction cups (round)

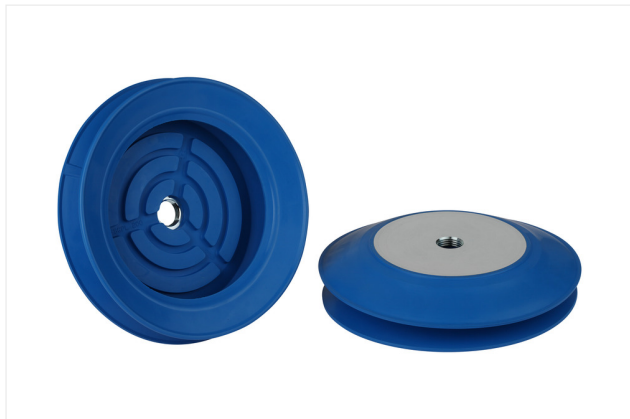
FSGPL 200 HT1-60 G1/2-IG

Part no.:10.01.06.03146

<https://www.schmalz.com/10.01.06.03146>

Home > Vacuum Technology for Automation > Vacuum Components > Vacuum Suction Cups > Bellows Suction Cups (Round) > Bellows Suction Cups FSGPL (1.5 Folds) > FSGPL 200 HT1-60 G1/2-IG

Bellows suction cup (round) for large, heavy and uneven workpieces



Size: 200

Suction cup material: High temperature material HT1

Material hardness [Shore A]: 60 Shore A

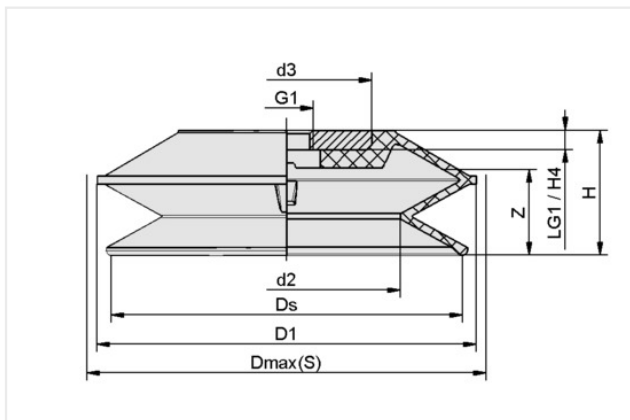
Material property: non-marking

Nipple material: Steel

Vacuum connection: G1/2"-F

Number of folds: 1.5

Design Data



Attribute	Value
d2	137 mm
d3	119.40 mm
D1	202 mm
Dmax(S)	208 mm
Ds	191 mm
G1	G1/2"-F
H	54 mm
H4	8 mm
LG1	8 mm
Z (Stroke)	37.20 mm

Note: Acceptable dimensional tolerances for elastomer parts concerning to DIN ISO 3302-1 M3

Technical Data

Attribute	Value
Suction force (-600mbar)	850 N
Pull-off force	950 N
Volume	876.52 cm ³
Curve radius (min) (convex)	350 mm
Hose diameter (rec.) d	12 mm
Size	200
Suction cup material	High temperature material HT1

Contact Schmalz

Schmalz Australia Pty Ltd | 25 Turbo Drive, Bayswater North, VIC, 3153 Melbourne, Australia | +61 3 9215 8800 | schmalz@schmalz.com.au

Bellows suction cups (round)

FSGPL 200 HT1-60 G1/2-IG

Part no...:10.01.06.03146

<https://www.schmalz.com/10.01.06.03146>

Material hardness [Shore A]	60 Shore A
Weight	1,014.50 g
Number of folds	1.50
Product family	FSGPL

Note: Suction force: The specified suction forces are theoretical values at a vacuum of -0.6 bar and with a dry, smooth and flat workpiece surface - they do not include a safety factor Hose diameter: The recommended hose diameter refers to a hose length of approx. 2 m