

## Flat suction cup (round)

PFYN 6 HT1-60 M5-AG

Part no.: 10.01.01.11131

<https://www.schmalz.com/10.01.01.11131>

Home > Vacuum Technology for Automation > Vacuum Components > Vacuum Suction Cups > Flat Suction Cups (Round) > Flat Suction Cups PFYN > PFYN 6 HT1-60 M5-AG

### Flat suction cup (round) for smooth or slightly rough surfaces



Size: 6

Suction cup material: High temperature material HT1

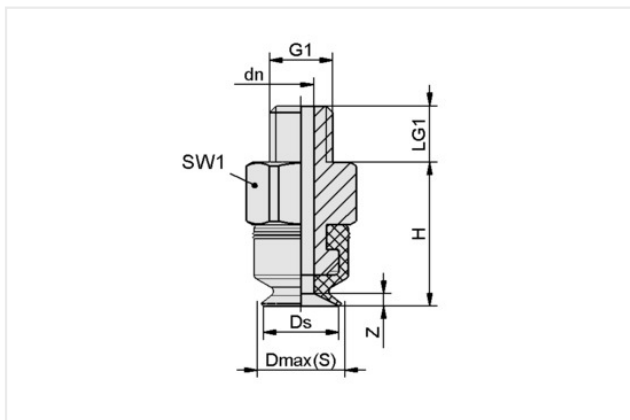
Material hardness [Shore A]: 60 Shore A

Material property: non-marking

Nipple material: Aluminum

Vacuum connection: M5-M

### Design Data



Attribute	Value
dn	2 mm
Dmax(S)	6.50 mm
Ds	6 mm
G1	M5-M
H	11.50 mm
LG1	4.50 mm
SW1	8 mm
Z (Stroke)	1 mm

Note: Acceptable dimensional tolerances for elastomer parts concerning to DIN ISO 3302-1 M3

### Technical Data

Attribute	Value
Suction force (-600mbar)	1.20 N
Volume	0.01 cm <sup>3</sup>
Curve radius (min) (convex)	7.50 mm
Hose diameter (rec.) d	2 mm
Size	6
Suction cup material	High temperature material HT1
Material hardness [Shore A]	60 Shore A

### Contact Schmalz

Schmalz Australia Pty Ltd | 25 Turbo Drive, Bayswater North, VIC, 3153 Melbourne, Australia | +61 3 9215 8800 | [schmalz@schmalz.com.au](mailto:schmalz@schmalz.com.au)

## Flat suction cup (round)

PFYN 6 HT1-60 M5-AG

Part no.:10.01.01.11131

<https://www.schmalz.com/10.01.01.11131>

Weight	1.10 g
Product family	PFYN
Number of folds	0

Note: Suction force: The specified suction forces are theoretical values at a vacuum of -0.6 bar and with a dry, smooth and flat workpiece surface - they do not include a safety factor  
Hose diameter: The recommended hose diameter refers to a hose length of approx. 2 m

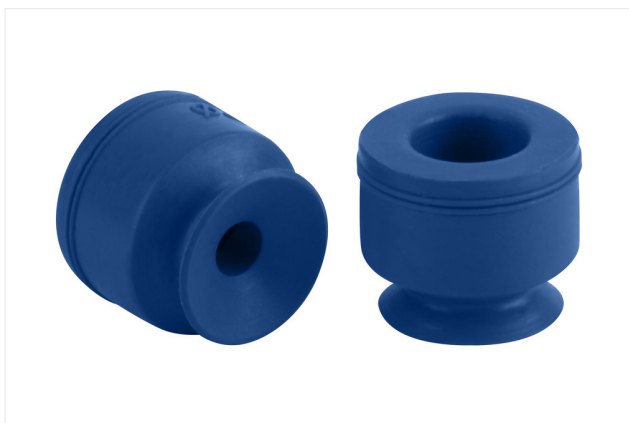
### Spare parts



#### SA-NIP N004 M5-AG DN200

Part no.:10.01.01.03526

Thread G1: M5-M
Length L1: 13.5 mm
Fitting length: 5 mm
Material: Aluminum



#### PFG 6 HT1-60 N004

Part no.:10.01.01.11159

Size: 6
Suction cup material: High temperature material HT1
Material hardness [Shore A]: 60 Shore A
Material property: non-marking

### Contact Schmalz

Schmalz Australia Pty Ltd | 25 Turbo Drive, Bayswater North, VIC, 3153 Melbourne, Australia | +61 3 9215 8800 | [schmalz@schmalz.com.au](mailto:schmalz@schmalz.com.au)