

## Flat suction cup (round)

SUF 8 HT1-60 M5-AG

Part no.: 10.01.01.14232

<https://www.schmalz.com/10.01.01.14232>

Home > Flat Suction Cups SUF > SUF 8 HT1-60 M5-AG

### Flat suction cup (round) for process safe handling of smooth or slightly rough surfaces



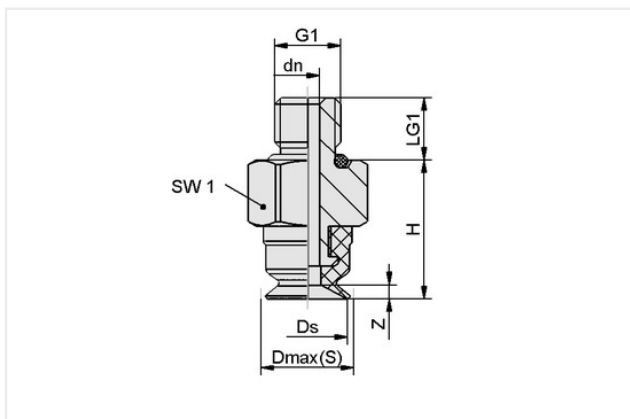
Size: 8

Suction cup material: High temperature material HT1

Material hardness [Shore A]: 60 Shore A

Vacuum connection: M5-M

### Design Data



Attribute	Value
Dmax(S)	8.40 mm
Ds	8 mm
dn	1.80 mm
G1	M5-M
H	10.50 mm
LG1	4.70 mm
SW1	8 mm
Z (Stroke)	0.80 mm

### Technical Data

Attribute	Value
Suction force (-600mbar)	2.40 N
Pull-off force	2.40 N
Volume	0.04 cm <sup>3</sup>
Curve radius (min) (convex)	8 mm
Hose diameter (rec.) d	2 mm
Size	8
Suction cup material	High temperature material HT1
Material hardness [Shore A]	60 Shore A
Weight	1.10 g

### Contact Schmalz

Schmalz Australia Pty Ltd | 25 Turbo Drive, Bayswater North, VIC, 3153 Melbourne, Australia | +61 3 9215 8800 | [schmalz@schmalz.com.au](mailto:schmalz@schmalz.com.au)

## Flat suction cup (round)

SUF 8 HT1-60 M5-AG

Part no.:10.01.01.14232

<https://www.schmalz.com/10.01.01.14232>

Product family	SUF
Number of folds	0

Note: Suction force: The specified suction forces are theoretical values at a vacuum of -0.6 bar and with a dry, smooth and flat workpiece surface - they do not include a safety factor  
Hose diameter: The recommended hose diameter refers to a hose length of approx. 2 m

### Spare parts



#### SC 020 M5-AG

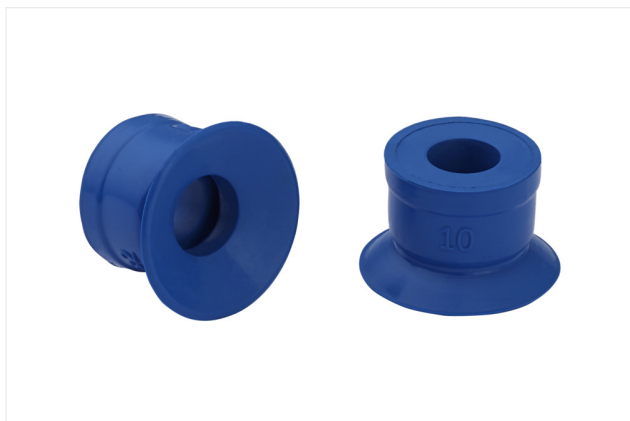
Part no.:10.01.06.04273

Connection geometry: 020

Vacuum connection: M5-M

Fitting length: 5 mm

Nominal diameter dn: 1.8 mm



#### SUF 8 HT1-60 SC020

Part no.:10.01.01.13986

Size: 8

Suction cup material: High temperature material HT1

Material hardness [Shore A]: 60 Shore A