

## Flat suction cup (oval)

SAOF 120x60 NBR-45 RA

Part no...:10.01.05.00597

<https://www.schmalz.com/10.01.05.00597>

Home > Vacuum Technology for Automation > Vacuum Components > Vacuum Suction Cups > Suction Cups for Handling Sheet Metal > Flat Suction Cups SAOF (Oval) > SAOF 120x60 NBR-45 RA

### Flat suction cup (oval) for very dynamic handling of smooth and oily workpieces



Dimensions (LxB): 120x60

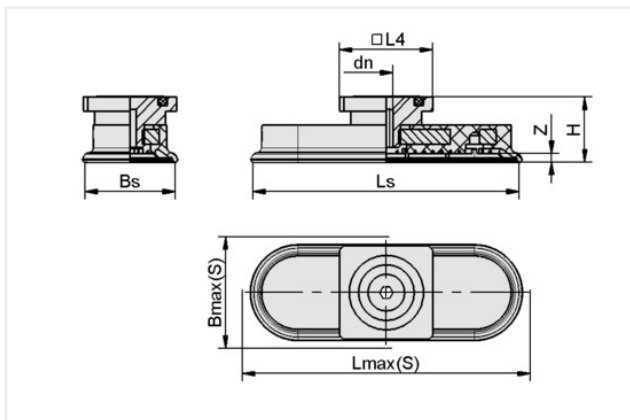
Suction cup material: Nitrile rubber NBR

Material hardness [Shore A]: 45 Shore A

Nipple material: Aluminum

Connection: RA

### Design Data



Attribute	Value
Bmax(S)	65 mm
Bs	57.60 mm
dn	6 mm
H	27 mm
L4	32 mm
Lmax(S)	128 mm
Ls	126.60 mm
Z (Stroke)	6 mm

Note: Acceptable dimensional tolerances for elastomer parts concerning to DIN ISO 3302-1 M3

### Technical Data

Attribute	Value
Suction force (-600mbar)	312 N
Lateral force	254 N
Lateral force (oily surface)	170 N
Volume	39.90 cm <sup>3</sup>
Curve radius (min) (convex)	75 mm
Hose diameter (rec.) d	6 mm
Number of folds	0

### Contact Schmalz

Schmalz Vacuum Technology Ltd. | 14-2900 Argentia Rd, L5N 7X9 Mississauga, ON, Canada | +1 905 569 9520 | [schmalz@schmalz.ca](mailto:schmalz@schmalz.ca)

## Flat suction cup (oval)

SAOF 120x60 NBR-45 RA

Part no...:10.01.05.00597

<https://www.schmalz.com/10.01.05.00597>

Suction cup material	Nitrile rubber NBR
Material hardness [Shore A]	45 Shore A
Weight	86 g
Product family	SAOF
Dimensions (LxB)	120x60

Note: Suction force: The specified suction forces are theoretical values at a vacuum of -0.6 bar and with a dry, smooth and flat workpiece surface - they do not include a safety factor Lateral force: The specified lateral forces are values measured at a vacuum of -0.6 bar with a dry or oily, smooth, flat workpiece surface. Depending on the workpiece surface and its quality, the actual values may deviate from these values Hose diameter: The recommended hose diameter refers to a hose length of approx. 2 m