

Compact ejector

SCP 20 NC AS VE

Part no.:10.02.02.00626

<https://www.schmalz.com/10.02.02.00626>



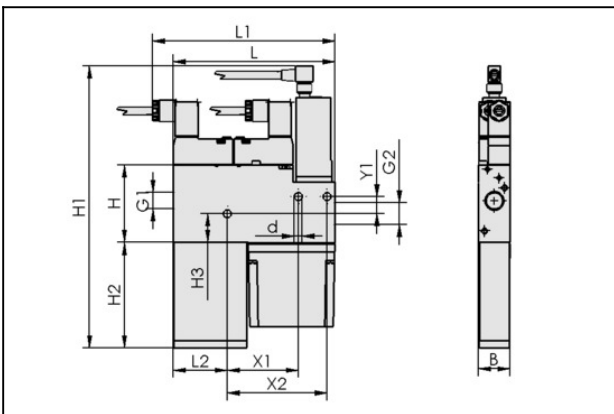
Homepage > Vacuum Technology for Automation > Vacuum Components > Vacuum Generators > Compact ejectors > Compact Ejectors SCP / SMP > SCP 20 NC AS VE

Compact ejector with integrated functions



Nozzle size: 2,0 mm
Suction rate (max): 116 l/min
Air consumption (during evac.):
190 l/min
Control: Normally closed
Design: With blow-off system
with: electronic vacuum switch

Design Data



Attribute	Value
B	22 mm
d	5.5 mm
G1	G1/4"-F
G2	G3/8"-F
H	54 mm
H1	167 mm
H2	58.5 mm
H3	20.1 mm
L	112.5 mm
L2	37.5 mm
X1	49.5 mm
X2	69.5 mm
Y1	12 mm

Compact ejector

SCP 20 NC AS VE

Part no.:10.02.02.00626

<https://www.schmalz.com/10.02.02.00626>



Technical Data

Attribute	Value
Nozzle diameter	2 mm
Degree of evacuation	85 %
Suction rate (max.)	116 l/min
Control valve	Normally closed
Suction rate (max.)	4.096 cfm
Product family	SCP

Note: The supply voltage for vacuum switches and solenoid valves is 24V DC Air consumption: At optimal operating pressure Hose diameter: For max. length 2 m

Spare Parts



FILT-EINS 14x49 PE-POR SCP-SMP

Part no.10.02.02.00654

Filter insert (round)

External diameter D: 14 mm

Length L: 49 mm

Filter material: Polyethylene

for: Compact ejectors

Compact ejector

SCP 20 NC AS VE

Part no.:10.02.02.00626

<https://www.schmalz.com/10.02.02.00626>



SD 50.5x21x53.5 SMP15/20

Part no.10.02.02.00651

Silencer for vacuum generators

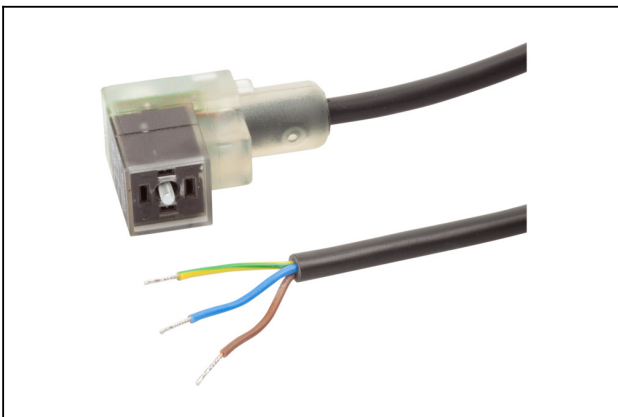
Length L: 50.5 mm

Width B: 21 mm

Height H: 53.5 mm

for: Compact ejectors SMP

Accessories



ASK B-Form-C 5000 K-3P

Part no.21.04.06.00084

Connection cable

Interface Connection 1:

Fem connect Form C

Cable length: 5000 mm

Interface Connection 2: Cable 3

Material: PVC-Cable

Shape: LED display



ASK B-M8-4 5000 K-4P

Part no.10.06.02.00031

Connection cable

Interface Connection 1:

Fem connect M8, 4 pol

Cable length: 5000 mm

Interface Connection 2: Cable 4

Material: PUR-Cable

Compact ejector

SCP 20 NC AS VE

Part no.:10.02.02.00626

<https://www.schmalz.com/10.02.02.00626>



ASK WB-M8-4 5000 K-4P

Part no.10.06.02.00032

Connection cable

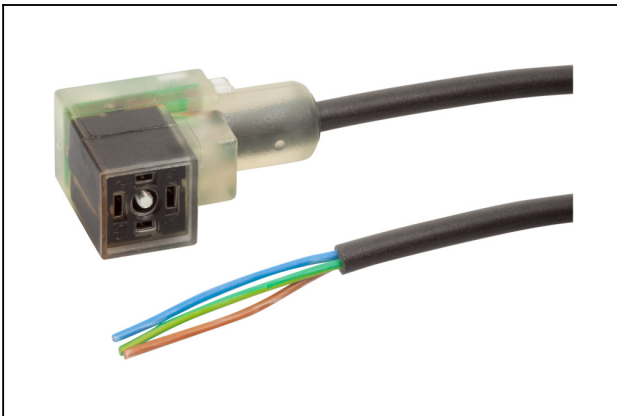
Interface Connection 1:

Elbow fem con M8, 4 pol

Cable length: 5000 mm

Interface Connection 2: Cable 4

Material: PUR-Cable



ASK 10000 K-3P

Part no.21.04.06.00118

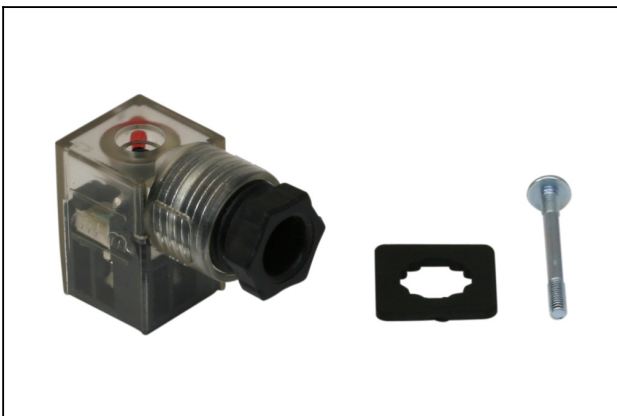
Connection cable

Cable length: 10000 mm

Interface Connection 2: Cable 3

Material: PUR-Cable

Shape: LED display



ASS B-C SK

Part no.21.04.06.00085

Connection plug

Interface Connection 1:

Socket DIN 175301-803A

Electrical connection: Screw contact