

Basic ejector

SBP-C 05 S01 NC VS-T

Part no.:10.02.01.00987

<https://www.schmalz.com/10.02.01.00987>

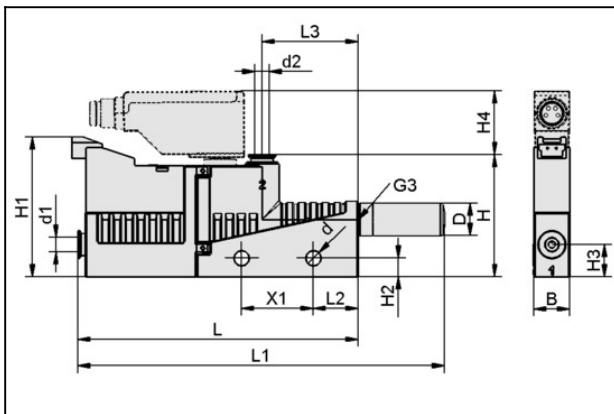
Homepage > Vacuum Technology for Automation > Vacuum Components > Vacuum Generators > Basic Ejectors > Basic Ejectors SBP-C with Additional Functions > SBP-C 05 S01 NC VS-T

Basic ejector "BASE PUMP-controlled" with very light construction



Nozzle size: 0,5 mm
 Connection: Hose D4(1)-D4(2)
 Pressure optimal: 4.5 bar
 Suction rate (max): 7 l/min
 Air consumption (during evac.):
 14 l/min
 Control: Normally closed
 with: electronic vacuum switch

Design Data



Attribute	Value
B	10 mm
d	4.2 mm
d1	4 mm
d2	4 mm
D	9 mm
G3	M5-F
H	34 mm
H1	39 mm
H2	5.2 mm
H3	9 mm
H4	17.7 mm
L	78 mm
L1	102 mm

Basic ejector

SBP-C 05 S01 NC VS-T

Part no.:10.02.01.00987

<https://www.schmalz.com/10.02.01.00987>



Attribute	Value
L2	12.5 mm
L3	27 mm
X1	20 mm

Technical Data

Attribute	Value
Nozzle diameter	0.5 mm
Degree of evacuation	85 %
Suction rate (max.)	0.4 m ³ /h
Suction rate (max.)	7 l/min
Air consumption suction	0.8 m ³ /h
Air consumption suction	14 l/min
Sound level free	58 dB(A)
Sound level suction	53 dB(A)
Pressure range (operating pressure)	3.0 ... 6.0 bar
Pressure optimal	4.5 bar
Recomm. internal hose diameter compressed air	2 mm
Recomm. internal hose diameter vacuum	2 mm
Weight	103 g
Operating temperature	0 ... 50 °C
Pressure range (operating pressure)	43.5...87.0
Pressure optimal	65.2 psi
Suction rate (max.)	0.247 cfm
Air consumption suction	0.494 cfm

Note: The supply voltage for vacuum switches and solenoid valves is 24 VDC Air consumption: On

Basic ejector

SBP-C 05 S01 NC VS-T

Part no.:10.02.01.00987

<https://www.schmalz.com/10.02.01.00987>

version with solenoid valves SBP-C 07 (24) / SBP-C 25 (320) and optimal operating pressure Hose diameter: For max. length 2 m

Spare Parts



SD M5-AG 9x24

Part no.10.02.01.00539

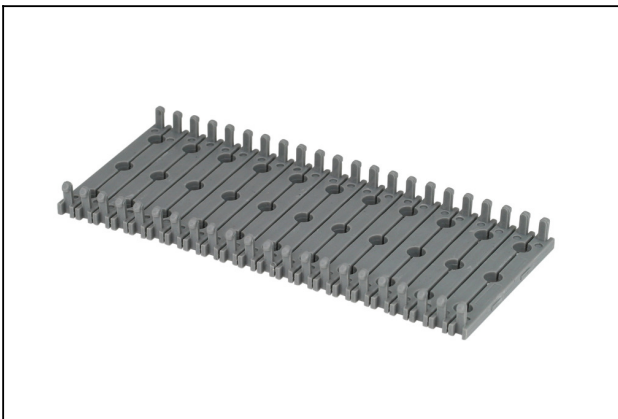
Silencer for vacuum generators

Thread G1: M5-M

External diameter D: 9 mm

Length L: 24 mm

Accessories



BEF-PL 110x44.5x3 SBP

Part no.10.02.01.00511

Mounting plate

Length L: 110 mm

Width B: 44.5 mm

Height H: 3 mm

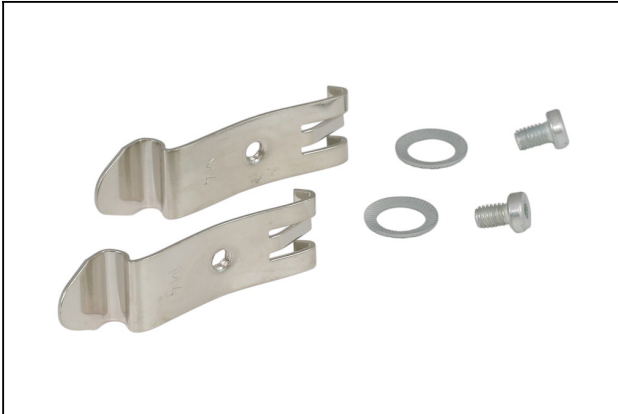
for: Basic ejectors SBP

Basic ejector

SBP-C 05 S01 NC VS-T

Part no.:10.02.01.00987

<https://www.schmalz.com/10.02.01.00987>



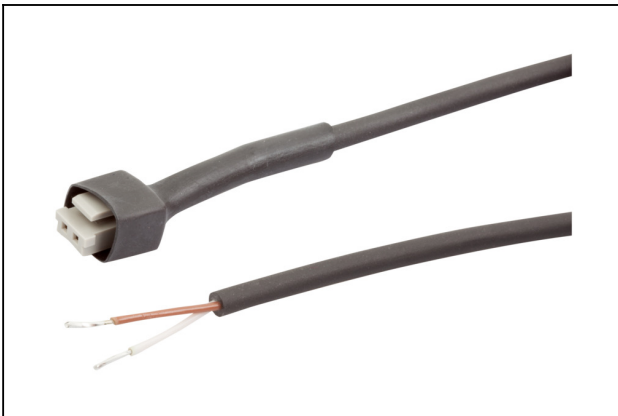
SET SBP M4-IG

Part no.10.02.01.00769

Mounting set

for: Basic ejectors SBP

Type: M4-IG



ASK B-MIC10 3000 K-2P

Part no.21.04.06.00086

Connection cable

Interface Connection 1: Connect. 10mm

Cable length: 3000 mm

Interface Connection 2: Cable 2

Material: PUR-Cable



ASK B-M8-4 5000 K-4P

Part no.10.06.02.00031

Connection cable

Interface Connection 1:

Fem connect M8, 4 pol

Cable length: 5000 mm

Interface Connection 2: Cable 4

Material: PUR-Cable

Basic ejector

SBP-C 05 S01 NC VS-T

Part no.:10.02.01.00987

<https://www.schmalz.com/10.02.01.00987>



VFI CN6/4 50

Part no.10.07.01.00241

Vacuum filter with replaceable filter cartridge

Connection: Hose 6/4 with Cap nut

Filter pore size: 50 μ m



VFI 4/2 50

Part no.10.07.01.00329

Vacuum filter with replaceable filter cartridge

Connection: Hose 4/2

Filter pore size: 50 μ m