

## Flat suction cup (round)

SGPN 40 HT1-60 G1/4-AG

Part no.:10.01.01.12845

<https://www.schmalz.com/10.01.01.12845>

Home > Vacuum Technology for Automation > Vacuum Components > Vacuum Suction Cups > Suction Cups for Plastic Films and Paper > Flat Suction Cups SGPN > SGPN 40 HT1-60 G1/4-AG

### Flat suction cup (round) for careful gripping of paper, plastic film, etc.



Size: 40

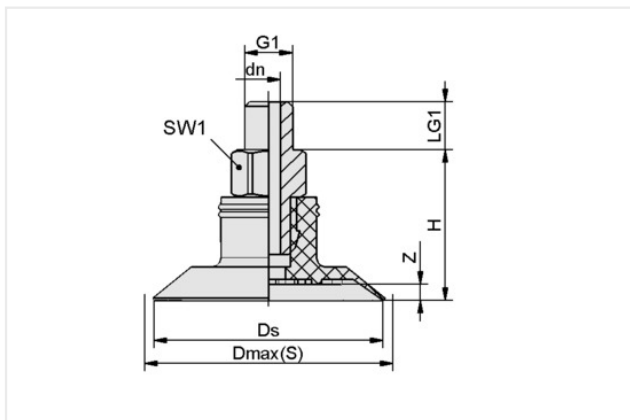
Suction cup material: High temperature material HT1

Material hardness [Shore A]: 60 Shore A

Nipple material: Aluminum

Vacuum connection: G1/4"-M

### Design Data



Attribute	Value
dn	5 mm
Dmax(S)	42 mm
Ds	40 mm
G1	G1/4"-M
H	25.60 mm
LG1	10 mm
SW1	17 mm
Z (Stroke)	2.30 mm

Note: Acceptable dimensional tolerances for elastomer parts concerning to DIN ISO 3302-1 M3

### Technical Data

Attribute	Value
Suction force (-600mbar)	33 N
Volume	3.80 cm <sup>3</sup>
Hose diameter (rec.) d	4 mm
Size	40
Number of folds	0
Suction cup material	High temperature material HT1
Material hardness [Shore A]	60 Shore A

### Contact Schmalz

Schmalz Australia Pty Ltd | 25 Turbo Drive, Bayswater North, VIC, 3153 Melbourne, Australia | +61 3 9215 8800 | [schmalz@schmalz.com.au](mailto:schmalz@schmalz.com.au)

## Flat suction cup (round)

SGPN 40 HT1-60 G1/4-AG

Part no.:10.01.01.12845

<https://www.schmalz.com/10.01.01.12845>

Weight	12.20 g
Product family	SGPN

Note: Suction force: The specified suction forces are theoretical values at a vacuum of -0.6 bar and with a dry, smooth and flat workpiece surface - they do not include a safety factor  
Hose diameter: The recommended hose diameter refers to a hose length of approx. 2 m

### Spare parts



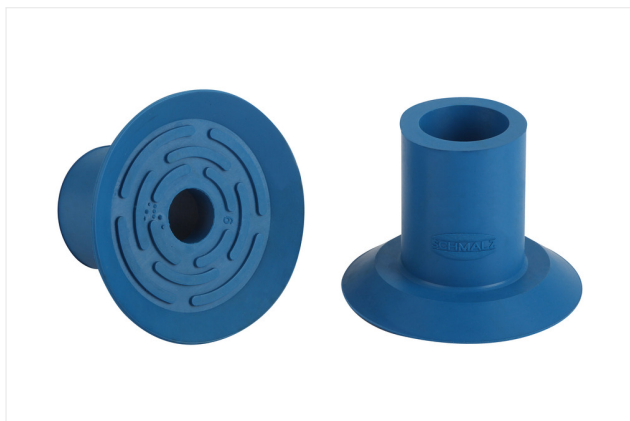
#### SA-NIP N035 G1/4-AG DN550

Part no.:10.01.01.00822

Thread G1: G1/4"-M

Fitting length: 5 mm

Material: Aluminum



#### SGP 40 HT1-60 N035

Part no.:10.01.01.12812

Size: 40

Suction cup material: High temperature material HT1

Material hardness [Shore A]: 60 Shore A

### Contact Schmalz

Schmalz Australia Pty Ltd | 25 Turbo Drive, Bayswater North, VIC, 3153 Melbourne, Australia | +61 3 9215 8800 | [schmalz@schmalz.com.au](mailto:schmalz@schmalz.com.au)