

Vacuum block

VCBL-S1 140x115x32.7 D-360 TV

Part no.:10.01.12.01299

<https://www.schmalz.com/10.01.12.01299>

Homepage > Vacuum Clamping Technology > Clamping Equipment for Woodworking > Clamping Equipment for Systems from SCM / Morbidelli
> Vacuum Blocks VCBL-S > VCBL-S1 140x115x32.7 D-360 TV

Vacuum block for SCM/Morbidelli console - Type 1

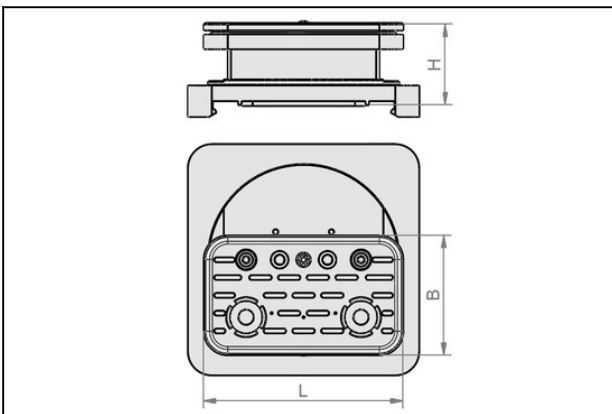


Dimensions (LxW): 140 x 115 mm

Height H: 32.7 mm

Arrangement: Can be turned 360°
with: Sensing valve

Design Data



Attribute	Value
B	115 mm
B1	120 mm
H	32.7 mm
L	140 mm

Technical Data

Attribute	Value
Weight	0.62 kg

SCM / Morbidelli is a registered and protected trademark. The articles listed here are products of J. Schmalz GmbH that have been designed to fit CNC machining centers from SCM / Morbidelli.

Vacuum block

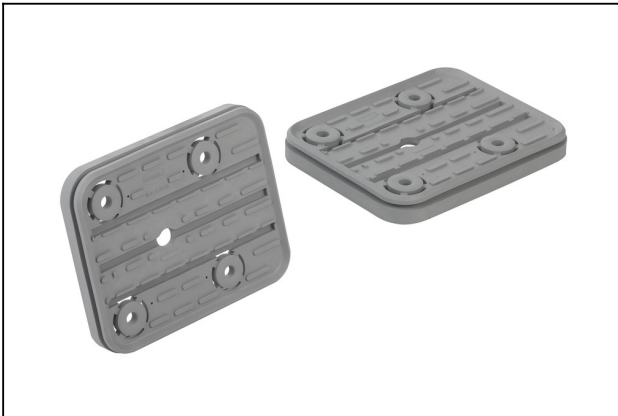
VCBL-S1 140x115x32.7 D-360 TV

Part no.:10.01.12.01299

<https://www.schmalz.com/10.01.12.01299>



Spare Parts



VCSP-U 140x115x16.5 VCBL-K1

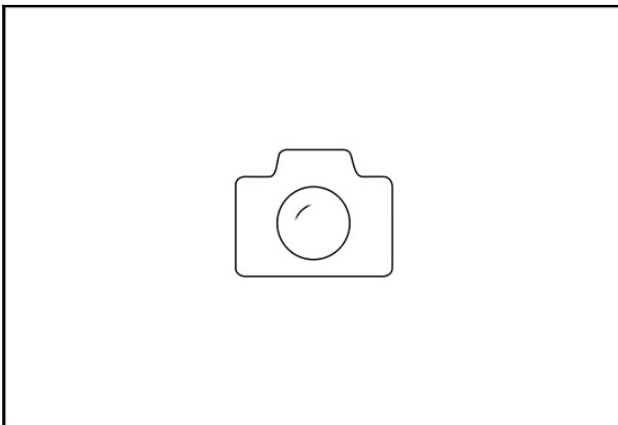
Part no.10.01.12.00228

Suction plate for vacuum block bottom

Dimensions (LxW): 140 x 115 mm

Height H: 16.5 mm

for: Vacuum block VCBL-K1



VCDR 115.5x43x5 VCBL-S

Part no.10.01.12.03569

Sealing frame (bottom)

Length L: 115.5 mm

Width B: 43 mm

Height H: 5 mm

for: Vacuum block VCBL-S



TV D9 4.3

Part no.10.01.12.02514

Touch valve for deactivation of unused suction cups or vacuum blocks

External diameter D: 9 mm

Spring stroke Z: 4.3 mm